

# QuecFOTA User Guide

Rev. QuecFOTA\_UGD\_V1.0

Date: 2012-10-26



**Our aim is to provide customers with timely and comprehensive service. For any assistance, please contact our company headquarter:**

**Quectel Wireless Solutions Co., Ltd.**

Room 501, Building 13, No.99, Tianzhou Road, Shanghai, China, 200233

Tel: +86 21 5108 6236

Mail: [info@quectel.com](mailto:info@quectel.com)

**Or our local office, for more information, please visit:**

[http://www.quectel.com/quectel\\_sales\\_office.html](http://www.quectel.com/quectel_sales_office.html)

**For technical support, to report documentation errors, please visit:**

<http://www.quectel.com/tecsupport.aspx>

**GENERAL NOTES**

QUECTEL OFFERS THIS INFORMATION AS A SERVICE TO ITS CUSTOMERS. THE INFORMATION PROVIDED IS BASED UPON CUSTOMERS' REQUIREMENTS. QUECTEL MAKES EVERY EFFORT TO ENSURE THE QUALITY OF THE INFORMATION IT MAKES AVAILABLE. QUECTEL DOES NOT MAKE ANY WARRANTY AS TO THE INFORMATION CONTAINED HEREIN, AND DOES NOT ACCEPT ANY LIABILITY FOR ANY INJURY, LOSS OR DAMAGE OF ANY KIND INCURRED BY USE OF OR RELIANCE UPON THE INFORMATION. ALL INFORMATION SUPPLIED HEREIN ARE SUBJECT TO CHANGE WITHOUT PRIOR NOTICE.

**COPYRIGHT**

THIS INFORMATION CONTAINED HERE IS PROPRIETARY TECHNICAL INFORMATION OF QUECTEL CO., LTD. TRANSMITTABLE, REPRODUCTION, DISSEMINATION AND EDITING OF THIS DOCUMENT AS WELL AS UTILIZATION OF THIS CONTENTS ARE FORBIDDEN WITHOUT PERMISSION. OFFENDERS WILL BE HELD LIABLE FOR PAYMENT OF DAMAGES. ALL RIGHTS ARE RESERVED IN THE EVENT OF A PATENT GRANT OR REGISTRATION OF A UTILITY MODEL OR DESIGN.

***Copyright © Quectel Wireless Solutions Co., Ltd. 2012. All rights reserved.***

## About the document

### History

Revision	Date	Author	Description
1.0	2012-10-24	Edison CHEN	Initial

## Contents

About the document .....	2
Contents .....	3
<b>1 Installation and Upgrade .....</b>	<b>5</b>
<b>2 Introduction .....</b>	<b>6</b>
2.1. Introduction to the UI .....	7
2.1.1. Configuration .....	7
2.1.2. Files setting .....	12
2.1.3. Upgrade.....	13
2.2. Abnormalities .....	17
2.2.1. Wrong Serial Port was selected .....	17
2.2.2. Wrong parameter of Baudrate .....	18
2.2.3. Upgrade with Incorrect Bin File.....	19
2.2.4. Abnormal for Power Supply / USB to Serial Cable / Serial Port.....	20

## Figure Index

FIGURE 1: MAIN INTERFACE .....	7
FIGURE 2: SELECT THE CORRECT SERIAL PORT .....	8
FIGURE 3: SELECT BAUDRATE .....	9
FIGURE 4: SET SW DATA LENGTH .....	10
FIGURE 5: GET DEBUG LOG .....	11
FIGURE 6: BIN FILE WINDOW OPENED .....	12
FIGURE 7: SELECT BIN FILE .....	13
FIGURE 8: CLICK THE START BUTTON TO UPGRADE .....	14
FIGURE 9: START TO UPGRADE AFTER RESTARTING THE MODULE .....	15
FIGURE 10: SW UPGRADE SUCCESS .....	16
FIGURE 11: CONNECT WITH WRONG SERIAL PORT .....	17
FIGURE 12: BAUDRATE IS INCORRECT .....	18
FIGURE 13: UPGRADE WITH INCORRECT BIN FILE .....	19
FIGURE 14: ABNORMAL POWER SUPPLY OR USB TO SERIAL CABLE / SERIAL PORT IS OCCUPIED .....	20
FIGURE 15: POWER SUPPLY OR USB TO SERIAL CABLE SUDDENLY ABNORMAL IN UPGRADE PROCESS .....	21

# 1 Installation and Upgrade

This document describes how to upgrade firmware using “QuecFOTA” upgrade tool supplied by Quectel. The tool can run approximately in PC without any installations if the OS of PC is among the ones as listed below.

- Windows 98
- Windows 2000
- Windows ME
- Windows XP
- Windows 7

Any upgraded version of the tool will be informed and provided in advance.

## 2 Introduction

The tool is used to upgrade firmware. It works as the following steps:

**Step1:** Configuration.

**Step2:** Files setting.

**Step3:** Upgrade.

The following describes the details of using the upgrade tool.

Quectel  
Confidential

## 2.1. Introduction to the UI

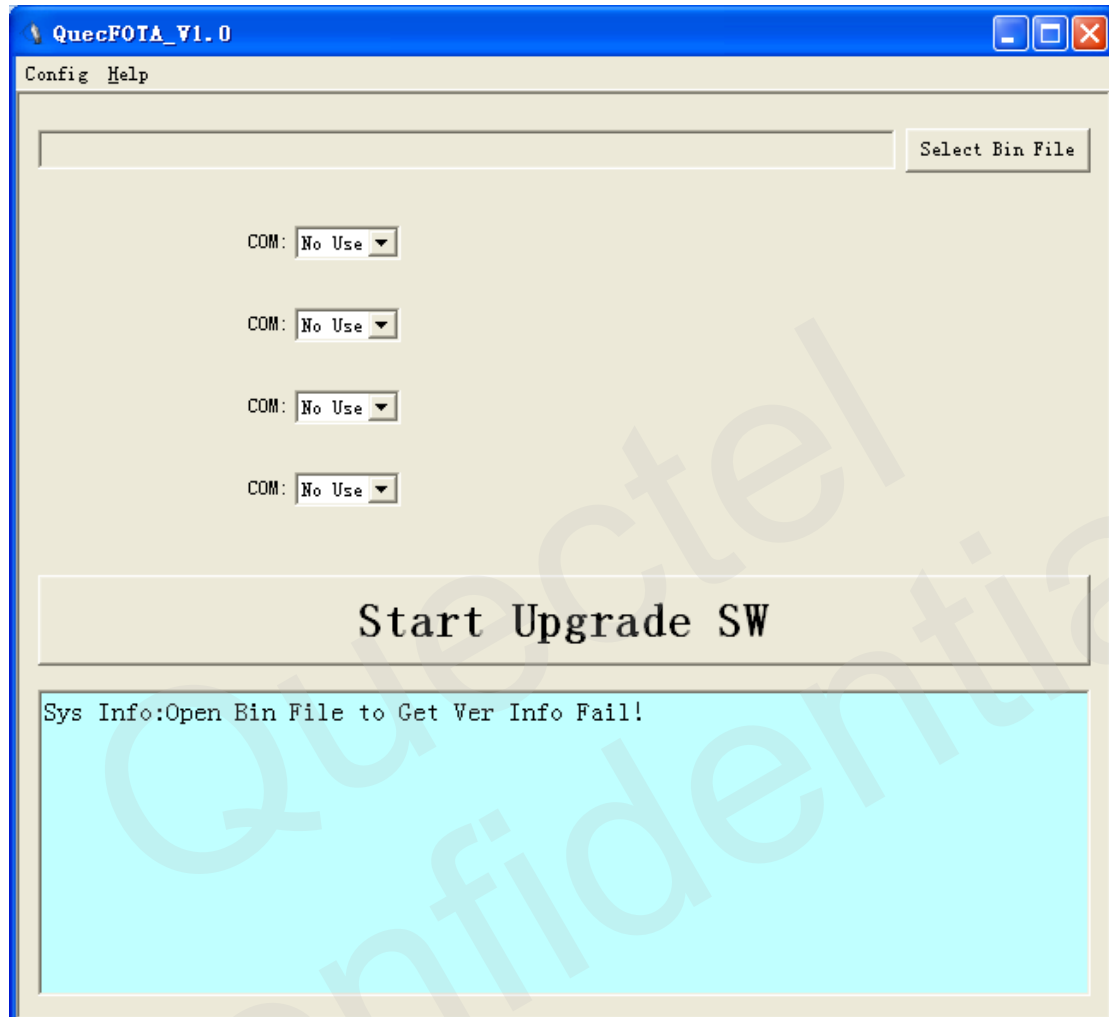


Figure 1: Main Interface

### 2.1.1. Configuration

#### 2.1.1.1. Serial Port

According to the connection of USB to serial cable between PC and Module, select the right serial port as Figure 2.



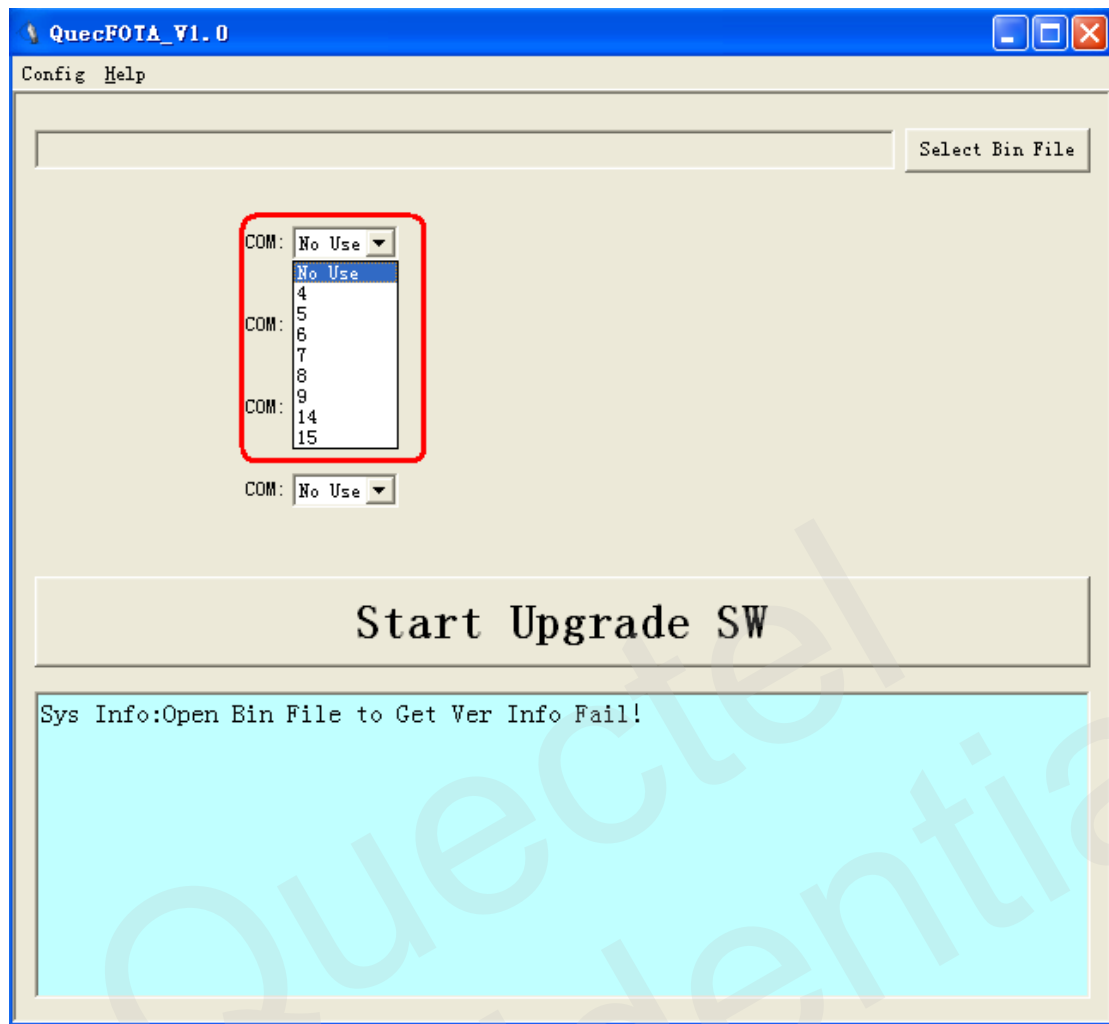


Figure 2: Select the Correct Serial Port

#### 2.1.1.2. Baudrate

Click the **Config** and **Setting** to choose an appropriate baudrate. Recommended to choose 115200 if using Quectel's module. Please refer to Figure 3.

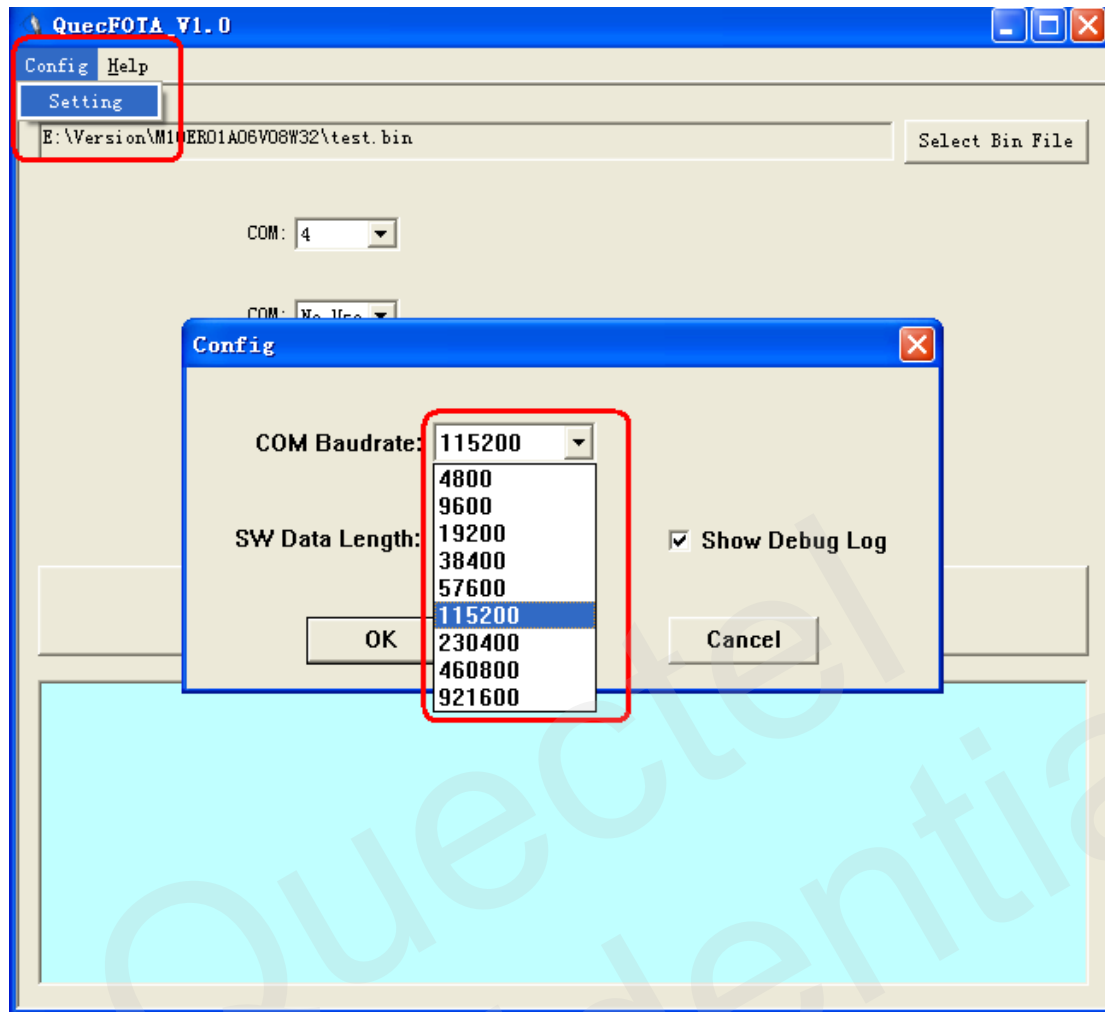


Figure 3: Select Baudrate

#### 2.1.1.3. SW Data Length

Click the **Config** and **Setting** to Set SW Data Length. It is recommended to set SW Data Length as 4K Bytes. Please refer to Figure 4.

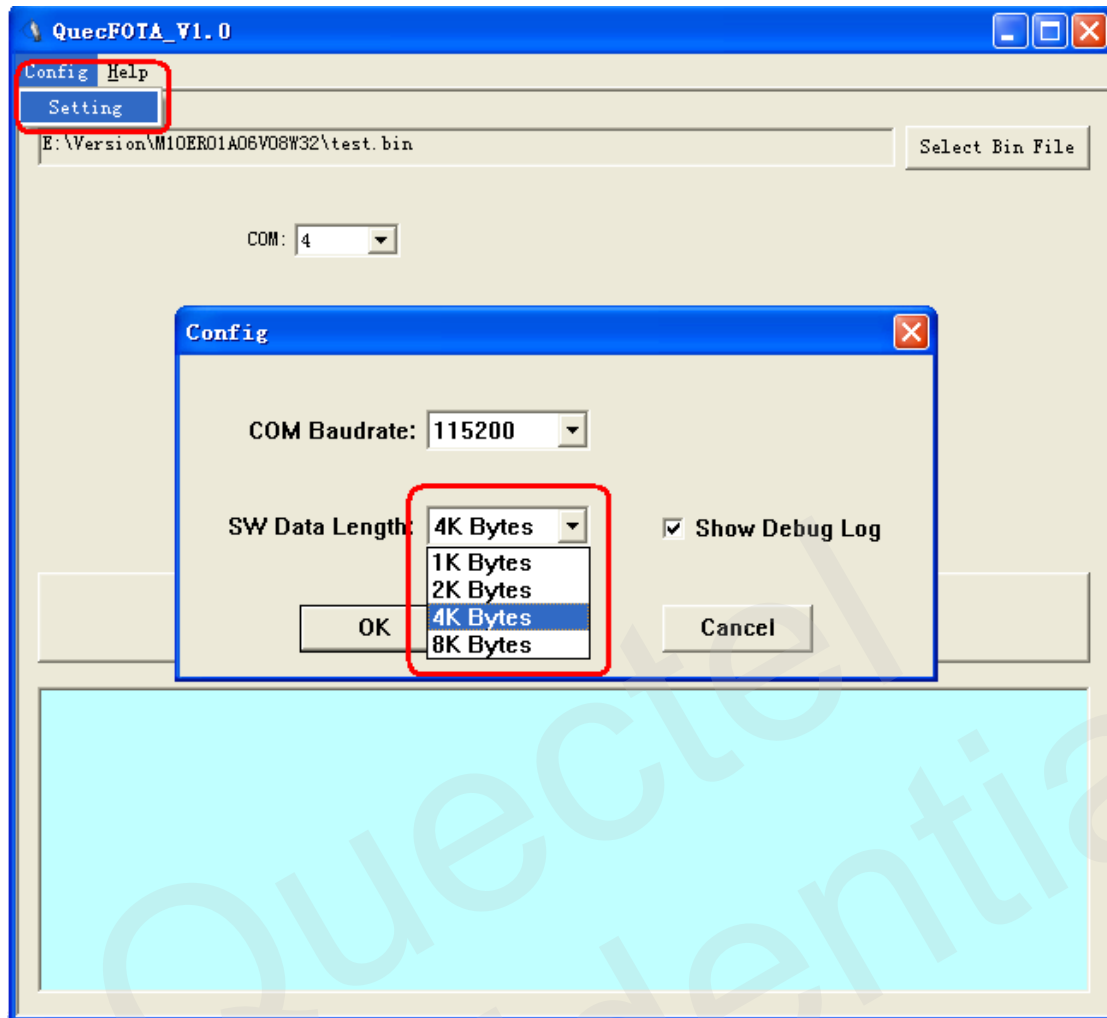


Figure 4: Set SW Data Length

#### NOTES

Because the bin file is large, so the bin file is split to many packages. The size of every package is the SW Data Length. If the file you select is much bigger, the download time is longer, but it depends on your computer's performance.

#### 2.1.1.4. Show Debug Log

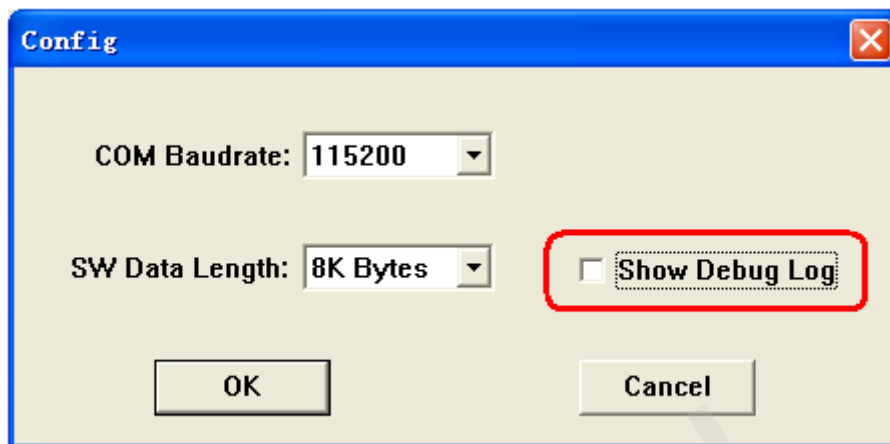


Figure 5: Get Debug Log

#### NOTES

Customers can ignore this function.

## 2.1.2. Files Setting

Please set the file setting as the following steps:

**Step 1:** Click the button Select Bin File. Please refer to Figure 6.

**Step 2:** Select the bin file which you want to download to module. Please refer to Figure 7.

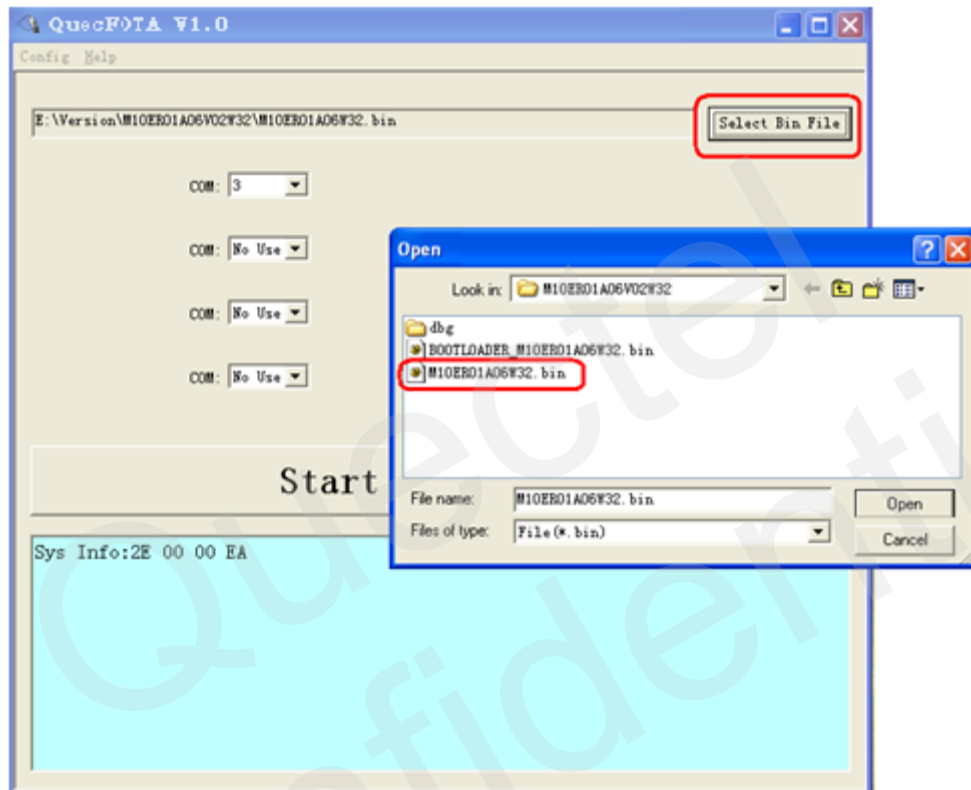


Figure 6: Bin File Window Opened

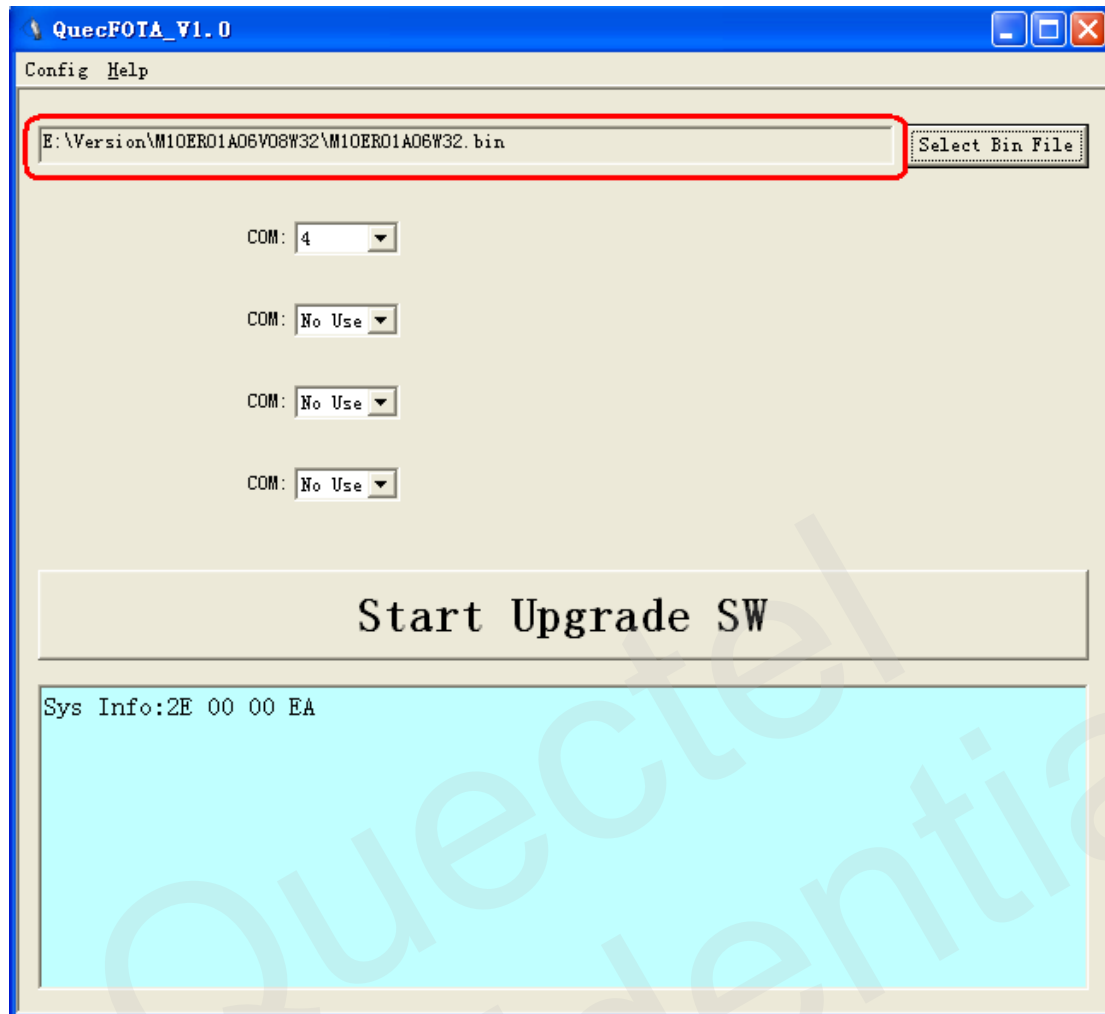


Figure 7: Select Bin File

### 2.1.3. Upgrade

**Step 1:** Click the **Start Upgrade SW** button to upgrade the firmware. Please refer to Figure 8.

**Step 2:** Upgrading after ***Restart the module*** as shown in Figure 9.

**Step 3:** It will indicate ***Pass Upgrade SW Success*** if successfully operated as shown in Figure 10.

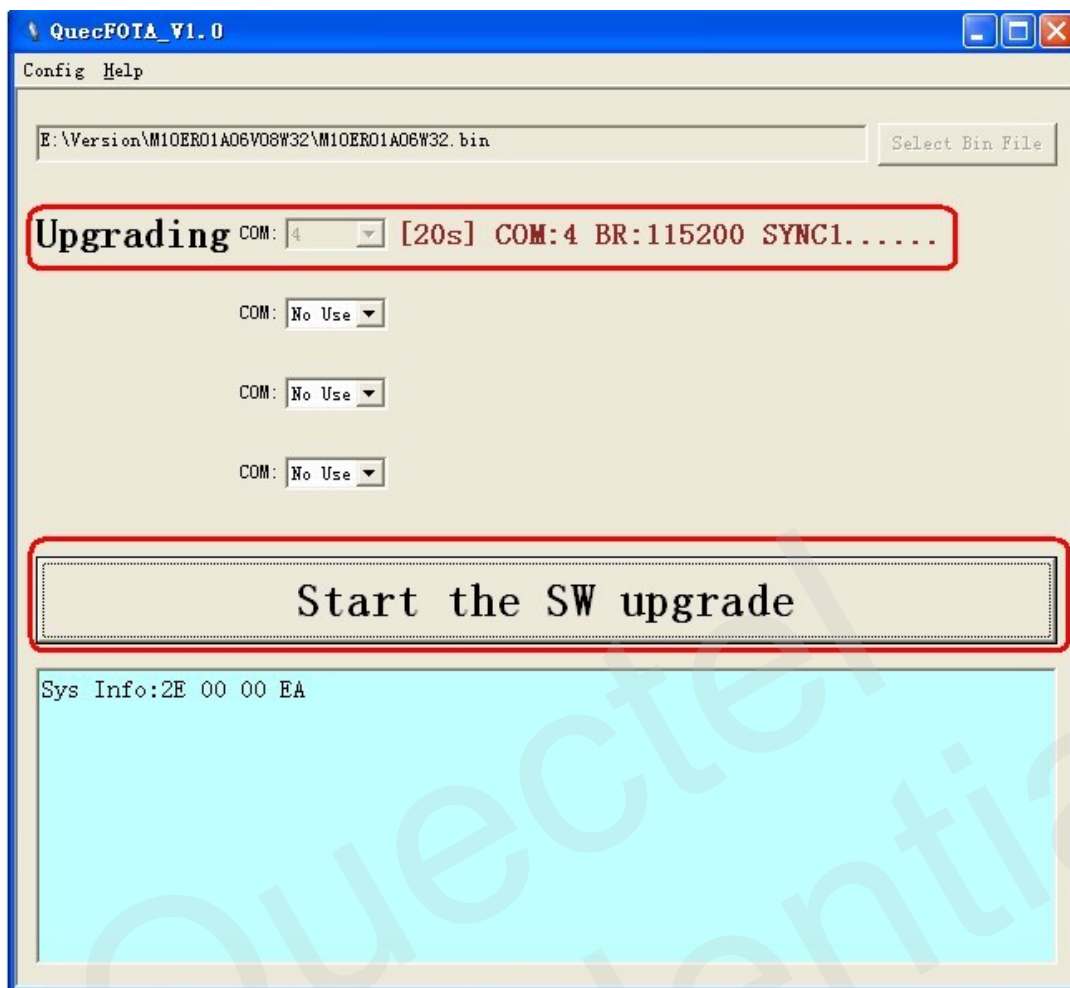


Figure 8: Click the Start Button to Upgrade

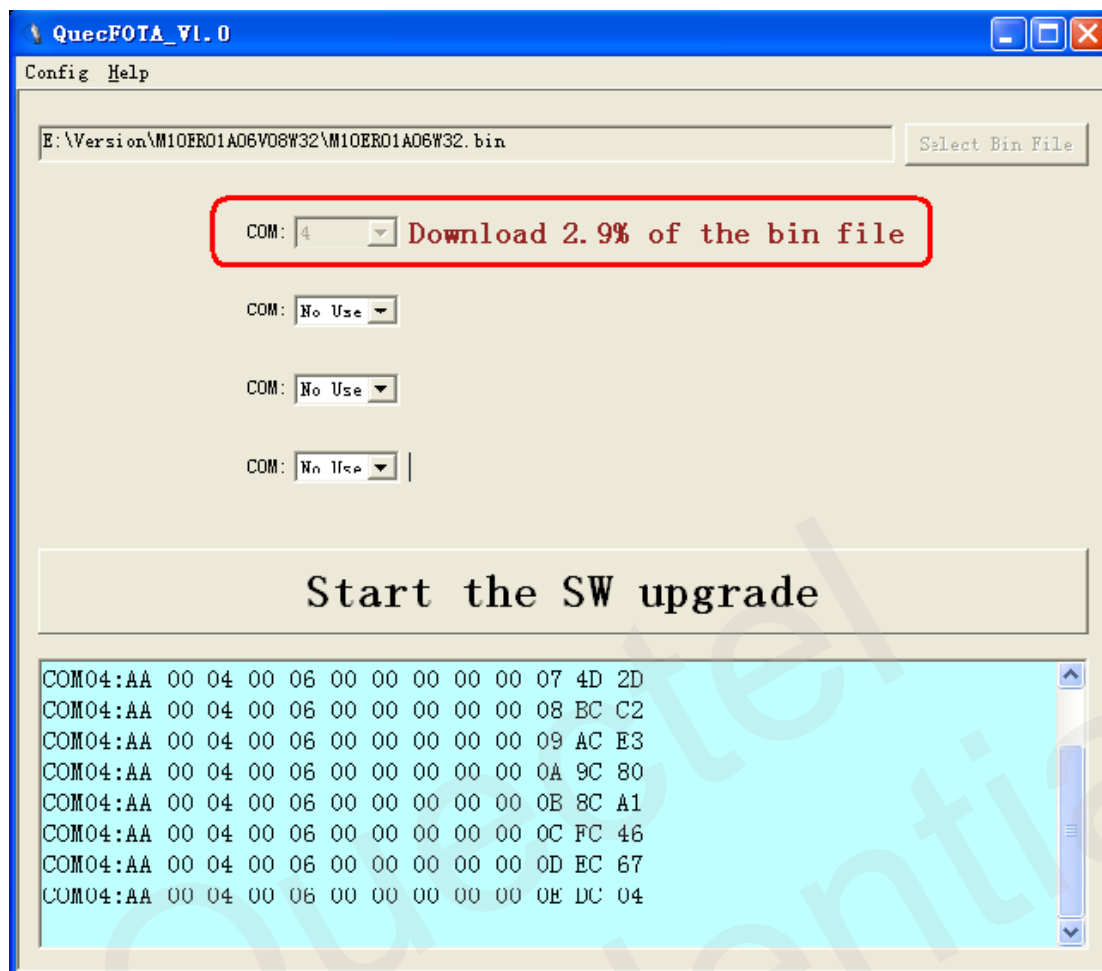


Figure 9: Start to Upgrade after Restarting the Module





Figure 10: SW Upgrade Success

## 2.2. Abnormalities

The wrong parameter of Port or Baudrate, the damaged EVB or module, the incorrect file etc. may lead to abnormalities as following.

### 2.2.1. Wrong Serial Port was selected

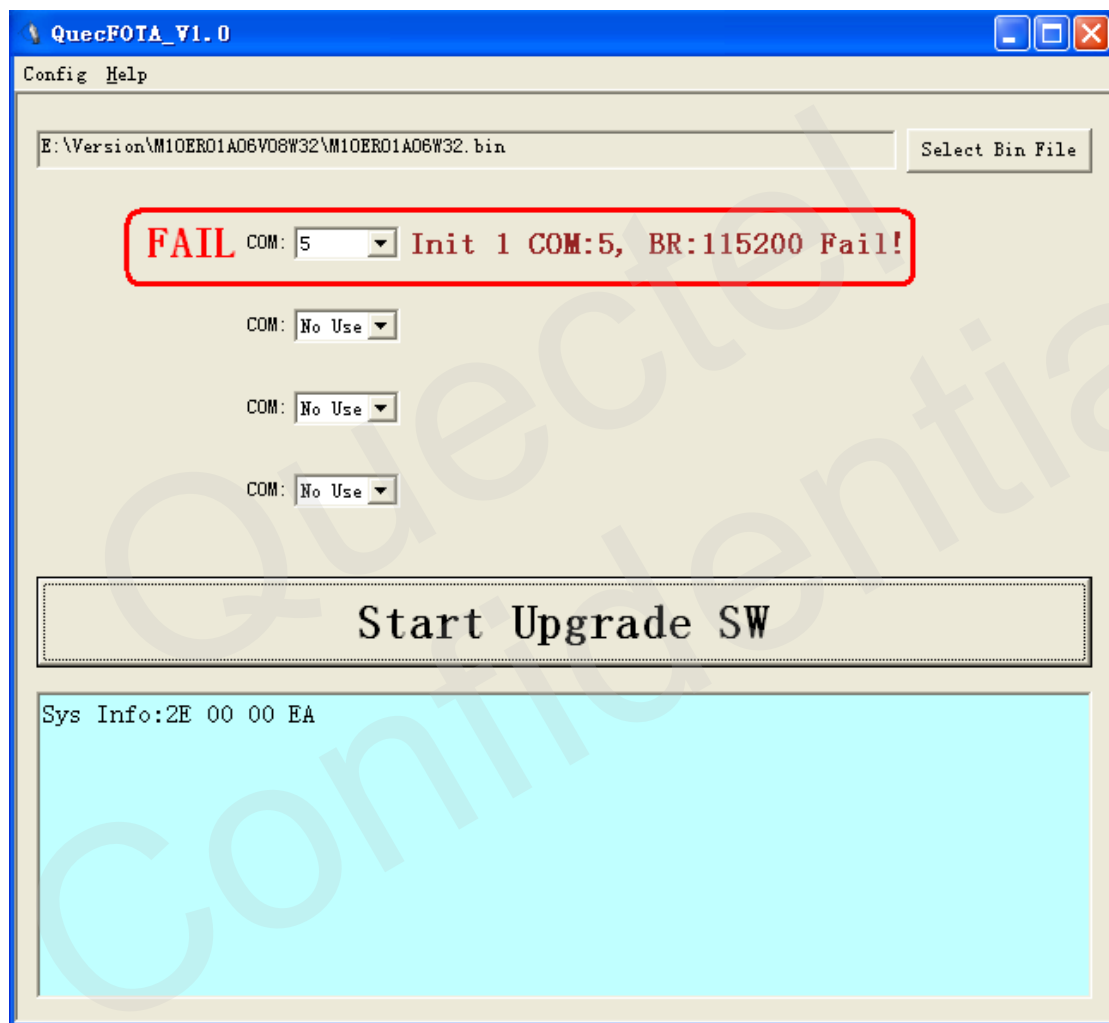


Figure 11: Connect with Wrong Serial Port

### 2.2.2. Wrong parameter of Baudrate

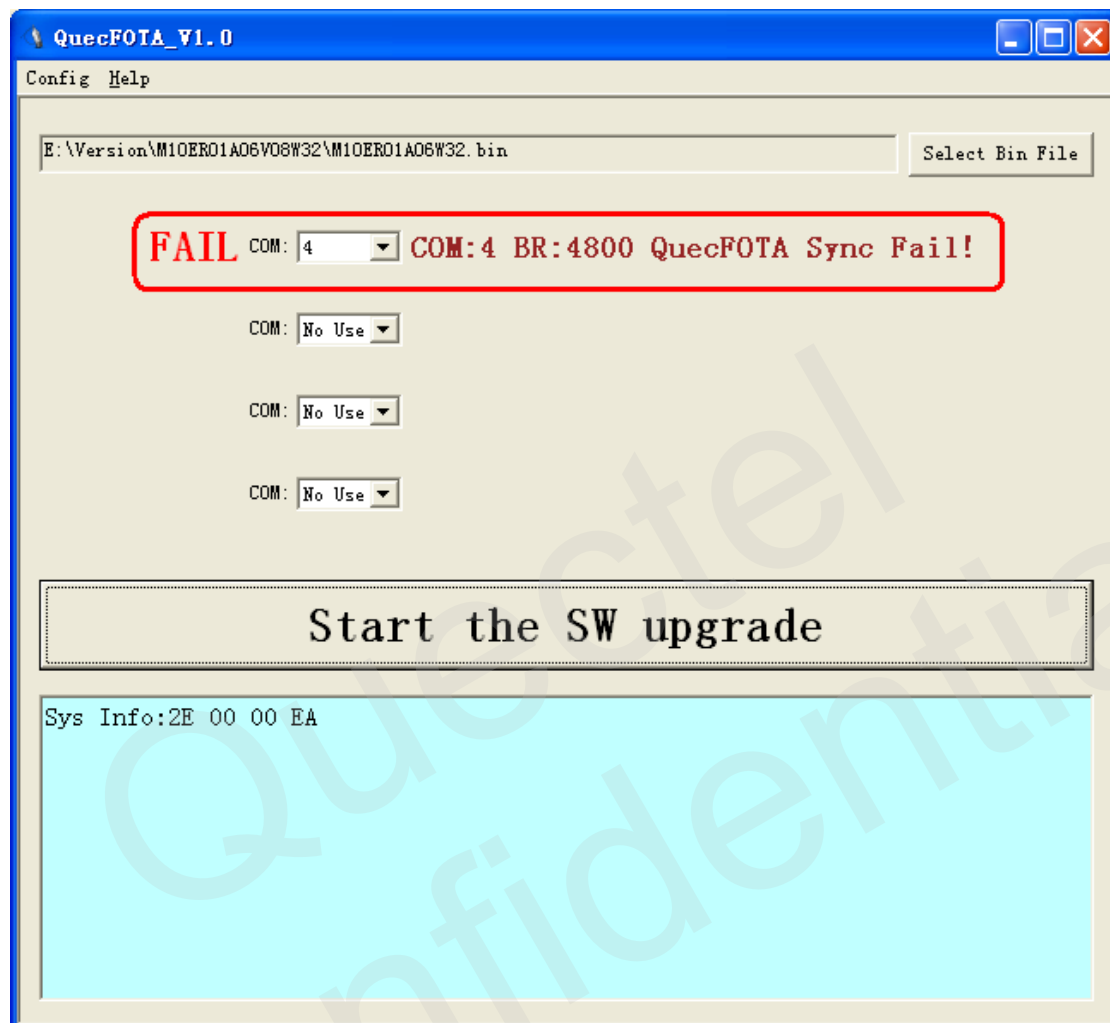


Figure 12: Baudrate is Incorrect

### 2.2.3. Upgrade with Incorrect Bin File

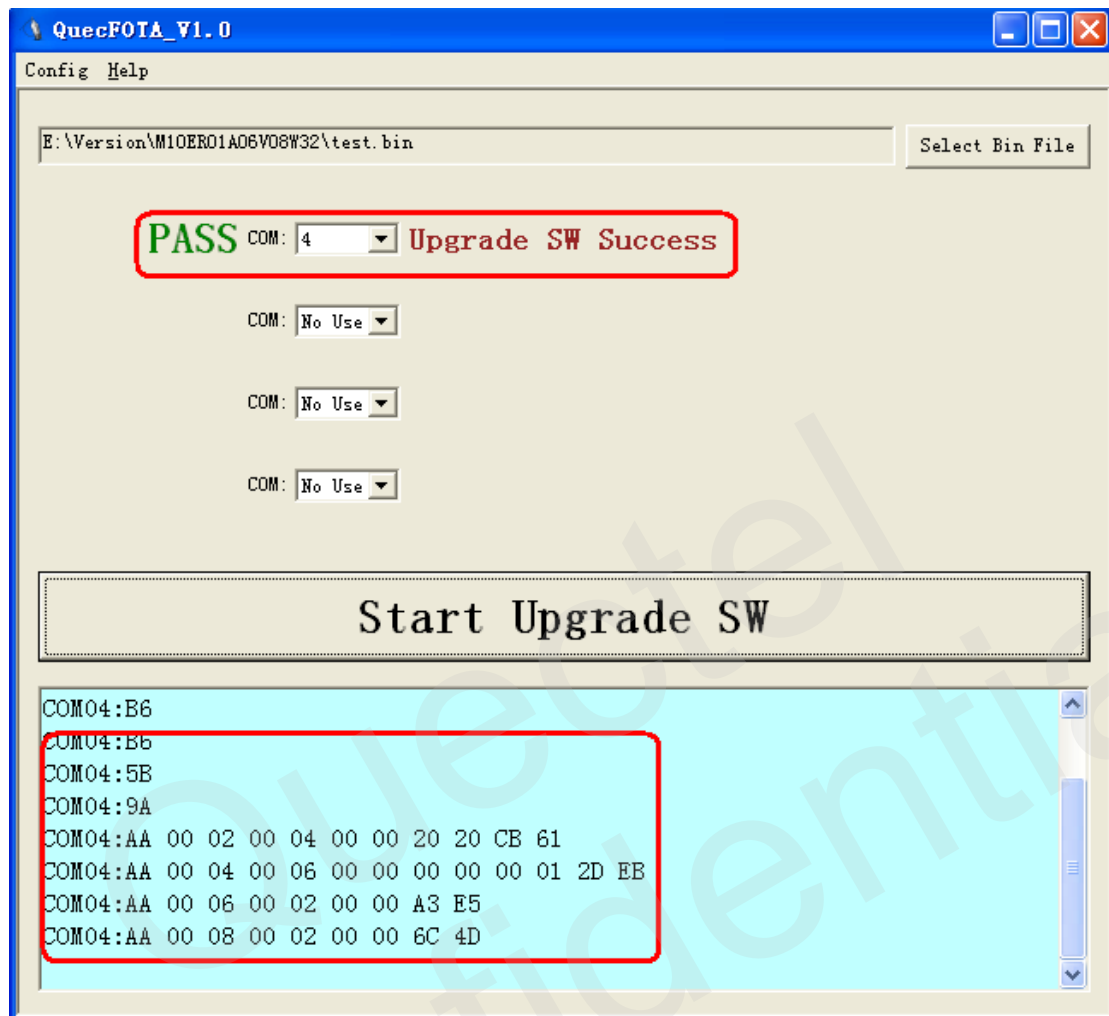


Figure 13: Upgrade with Incorrect Bin File

## 2.2.4. Abnormal for Power Supply / USB to Serial Cable / Serial Port

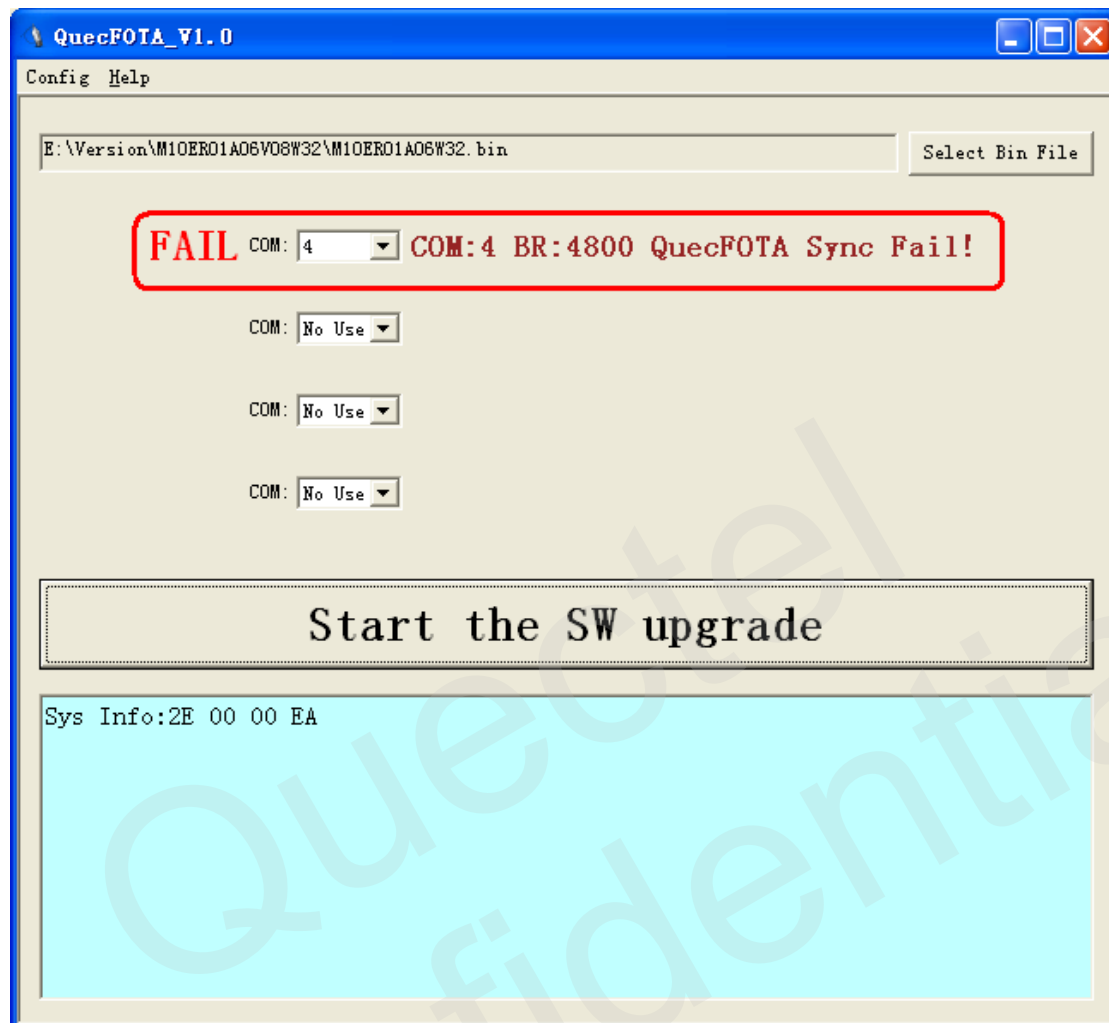


Figure 14: Abnormal Power Supply or USB to Serial Cable / Serial Port is Occupied

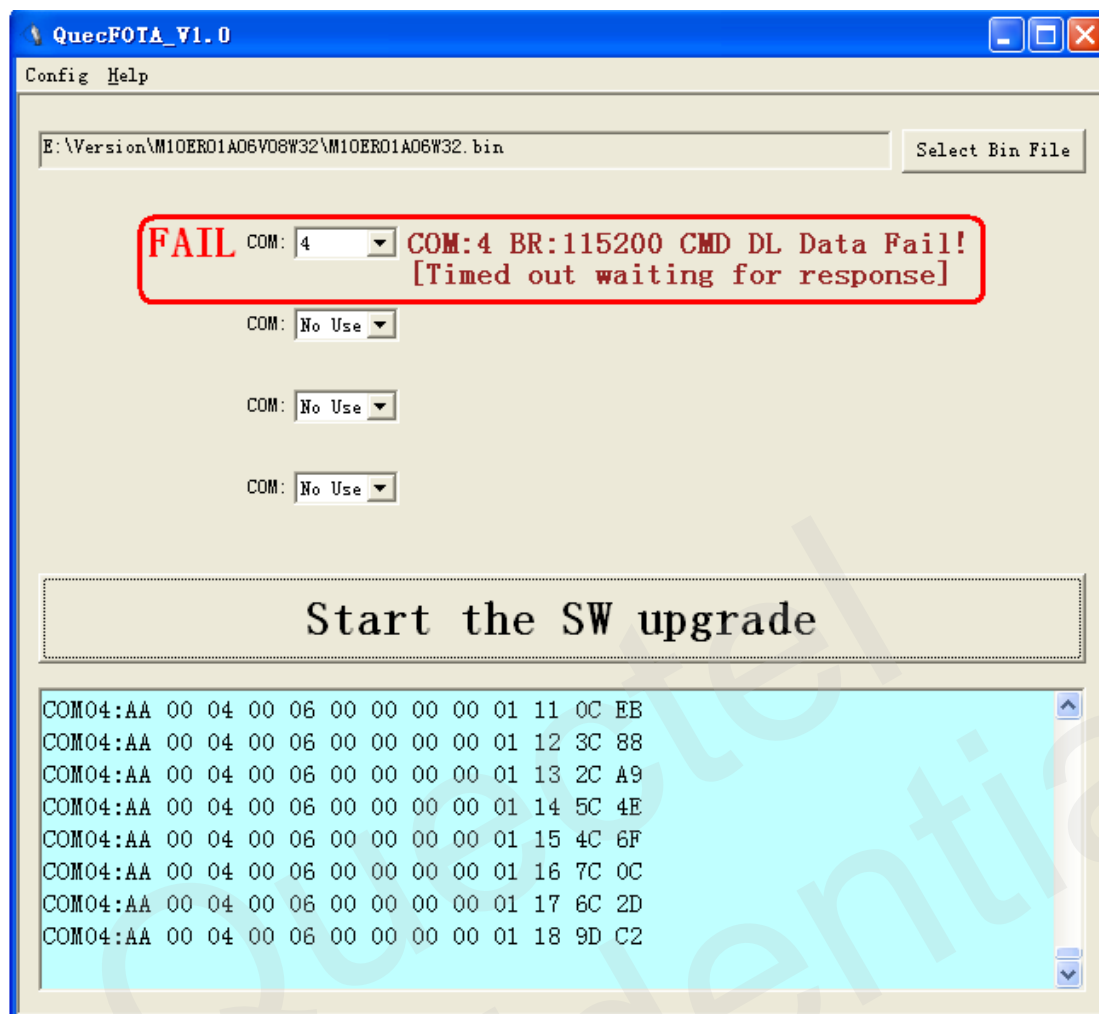


Figure 15: Power Supply or USB to Serial Cable Suddenly Abnormal in Upgrade Process