



QServer User Guide

QServer_V1.0

Document Title:	QServer User Guide
Revision:	1.0
Date:	2011-3-23
Status:	Release
Document Control ID:	QServer_V1.0

General Notes

Quectel offers this information as a service to its customers, to support application and engineering efforts that use the products designed by Quectel. The information provided is based upon requirements specifically provided to Quectel by the customers. Quectel has not undertaken any independent search for additional relevant information, including any information that may be in the customer's possession. Furthermore, system validation of this product designed by Quectel within a larger electronic system remains the responsibility of the customer or the customer's system integrator. All specifications supplied herein are subject to change.

Copyright

This document contains proprietary technical information which is the property of Quectel Limited. The copying of this document and giving it to others and the using or communication of the contents thereof, are forbidden without express authority. Offenders are liable to the payment of damages. All rights are reserved in the event of grant of a patent or the registration of a utility model or design. All specification supplied herein are subject to change without notice at any time.

Copyright © Quectel Wireless Solutions Co., Ltd. 2011

Contents

Contents	2
Figure Index	3
0. Introduction.....	4
1. Installation.....	5
2. Introduction of the UI and Function.....	6
2.1. Option Configuration	7
2.2. Auto Send	7
2.3. Auto Reply	8
2.4. Manual Send.....	8

Figure Index

FIGURE 1: THE FUNCTIONS OF THE TOOL	6
FIGURE 2: OPTION CONFIGURATION.....	7
FIGURE 3: AUTO SEND DATA OPERATION	7
FIGURE 4: AUTO REPLY DATA OPERATION.....	8
FIGURE 5: MANUAL SEND DATA OPERATION.....	8

0. Introduction

The present document describes how to use “QServer” tool which is designed by Quectel.

1. Installation

The tool can run without installation. And it supports the following OS:

- Windows 95
- Windows 98
- Windows 2000
- Windows ME
- Windows XP
- Windows Vista
- Windows 7

2. Introduction of the UI and Function

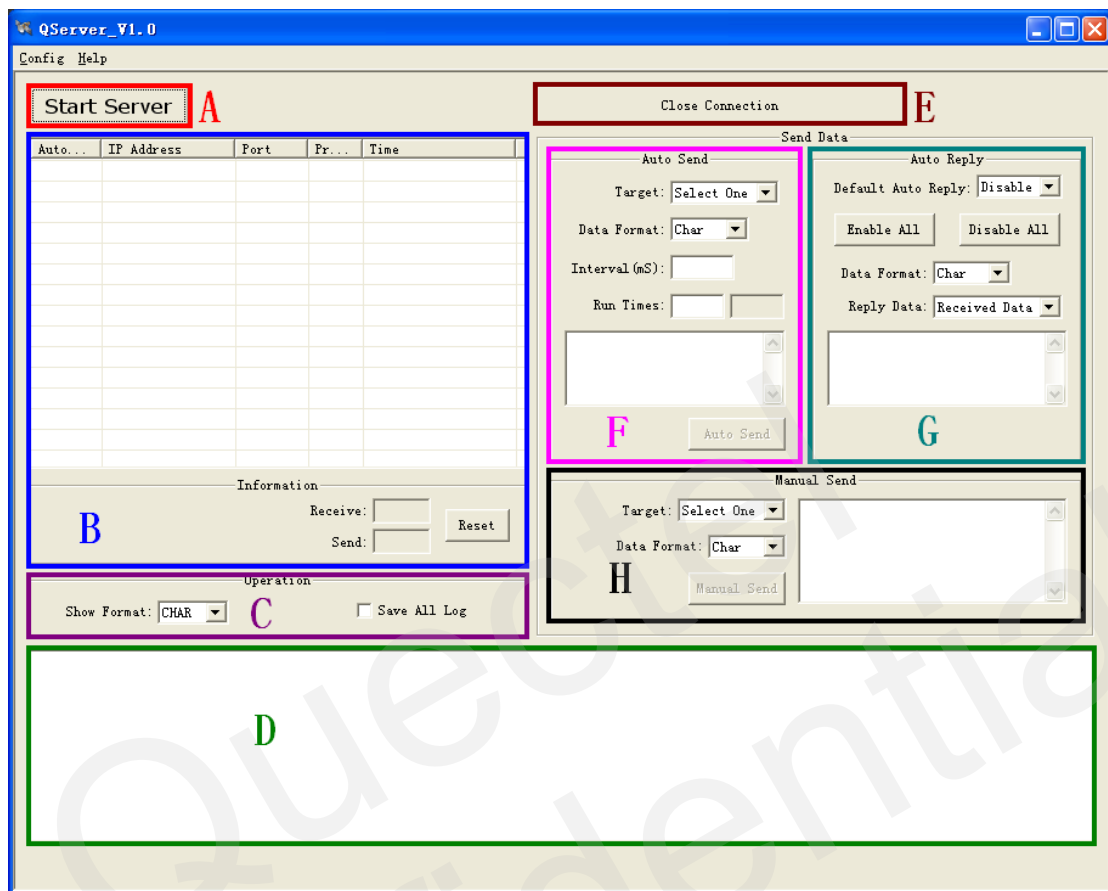


Figure 1: The Functions of The Tool

- A) A area controls this server tool to start or end.
- B) B area displays all connection information.
- C) C area controls LOG information.
- D) D area is used to show received data according to the “Show Format”.
- E) E area is used to disconnect the connection which you choose.
- F) F area is used to auto send data.
- G) G area is used to auto reply.
- H) H area is used to manually send data

2.1. Option Configuration

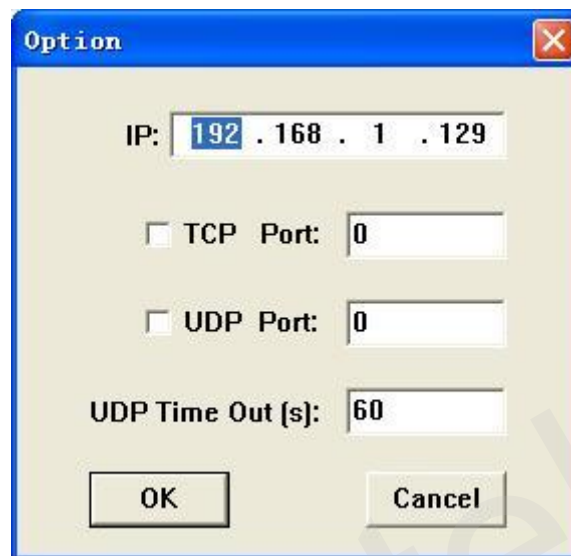


Figure 2: Option Configuration

Click menu Config > Option to get Option dialog. It includes the following settings:

- A) IP Address of server
- B) Set and select Port of TCP and UDP
- C) Time out for UDP connection

2.2. Auto Send



Figure 3: Auto Send Data Operation

- A) Target: Send data to all connections or a connection which you choose currently.

- B) Data Format: Choose the format of data, “Char” or “HEX”
- C) Interval(mS): Send data at interval
- D) Run Times: The run times of Auto Send

2.3. Auto Reply

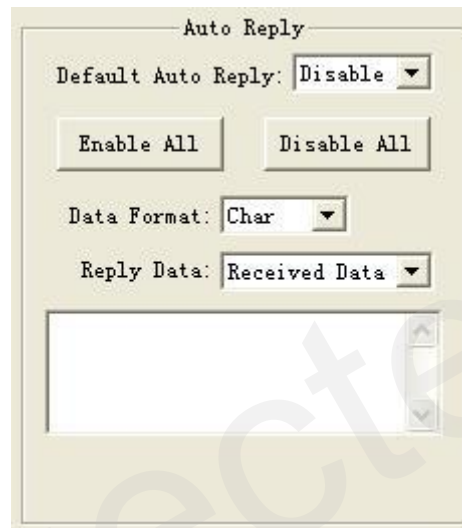


Figure 4: Auto Reply Data Operation

- A) Default Auto Reply: enable or disable auto reply for new connection(s)
- B) Enable ALL, Disable ALL: setting for all current connections
- C) Reply Data: Choose the Received Data or the Input Data
- D) Data Format: Choose the format of data that you input, “Char” or “HEX”

2.4. Manual Send

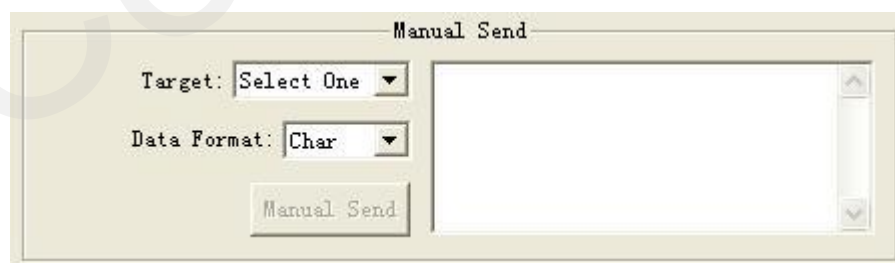


Figure 5: Manual Send Data Operation

- A) Target: Send data to all connections or a connection which you choose
- B) Data Format: Choose the format of data, “Char” or “HEX”



Shanghai Quectel Wireless Solutions Co., Ltd.

Room 501, Building 13, No.99, TianZhou Road, Shanghai, China 200233

Tel: +86 21 54453668

Mail: info@quectel.com