

MODULES FOR DEVELOPMENT QUECTEL / EBM

www.ebmelectronics.com



Nowadays, cellular communication has allowed a large number of interconnected devices to be generated and the advancement of this technology allows us to transmit larger data packets over the network achieve low operating costs, according to the applications, from sending the status of a sensor to the video transmission. Electrobiomedical generates development tools and final devices, for use in education and industry in applications such as wearables, IOT, lighting control, automation, smartcity, logistics, health, among others. The connectivity of the devices are available for 2G, 3G and LTE networks, some of these include: bluetooth and GPS connectivity, as well as microcontrollers that allow you to go a step further.

We have focused on developing products for popular platforms such as Raspberry Pi, Arduino, Orange Pi and 96boards-Consumer edition (coming soon), which gives a wide coverage in development systems.

We invite you to know the solutions and connect your application to the networks.

"Things" will clearly constitute the majority of connected devices by 2020.

IoT Analytics

MODULES FOR DEVELOPMENT QUECTEL / EBM

www.ebmelectronics.com



*Imagen de referencia



Module: Quectel M95 GSM/GPRS

- **Specifications:** Full UART, PWRKEY
- **Connector:** Raspberry Pi 2, 3, Zero
- **Antenna:** UFL- SMA
- **Size SIM:** Standard
- **LEDs:** ON, STATUS, NETWORK
- **Power supply:** 5VDC/2A

Reference: EBM-G001

*Imagen de referencia



Module: Quectel UG96 3G/GSM/GPRS/EDGE

- **Band:** 800/850/900/1900/2100@UMTS, 850/900/1800/1900@GSM
- **Specifications:** Full UART, PWRKEY
- **Connector:** Raspberry Pi 2, 3, Zero
- **Antenna:** UFL- SMA
- **Size SIM:** Standard
- **LEDs:** ON, STATUS, NETWORK
- **Power supply:** 5VDC/2A

Reference: EBM-G002

*Imagen de referencia



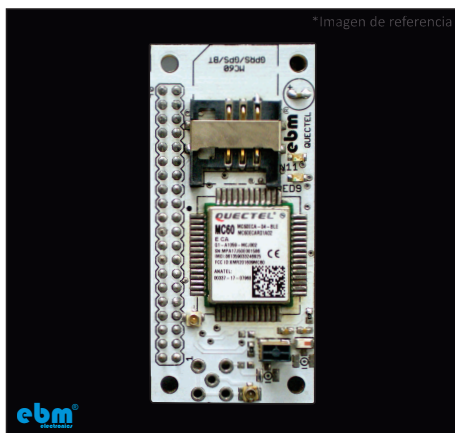
Module: Quectel BG96-EG95 3G/GSM/GPRS/EDGE/GPS (opcional)

- **Band:** B1/B2/B3/B4/B5/B8/B12/B13/B18/B19/B20/B26/B28-B2/B4 B5/B12/B13
- **Specifications:** Full UART, PWRKEY
- **Connector:** Raspberry Pi 2, 3, Zero
- **Antenna:** UFL- SMA, GPS (SMD-UFL)
- **Size SIM:** Standard
- **LEDs:** ON, STATUS, NETWORK
- **Power supply:** 5VDC/2A

Reference: EBM-G003

MODULES FOR DEVELOPMENT QUECTEL / EBM

www.ebmelectronics.com



Module: Quectel MC60 GSM/GPRS/GPS/BLUETOOTH

- **Specifications:** Full UART, PWRKEY
- **Connector:** Raspberry Pi 2, 3, Zero
- **Antenna:** GSM (UFL-SMA), BT(SMD-UFL), GPS(SMD-UFL)
- **Size SIM:** Standard
- **LEDs:** ON, NETWORK
- **Power supply:** 5VDC/2A

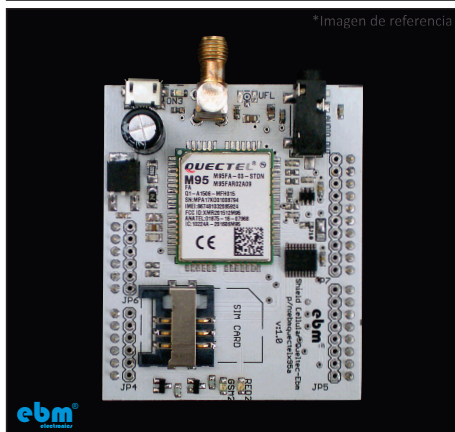
Reference: EBM-G004



Module: Quectel M95 GSM/GPRS

- **Specifications:** Full UART, PWRKEY, MICP, LOUDSPKP
- **Connector:** Arduino
- **Voltage:** GPIO, 3V or 5V
- **Antenna:** UFL- SMA
- **Size SIM:** Standard
- **LEDs:** ON, STATUS, NETWORK
- **Power supply:** 12VDC/2A

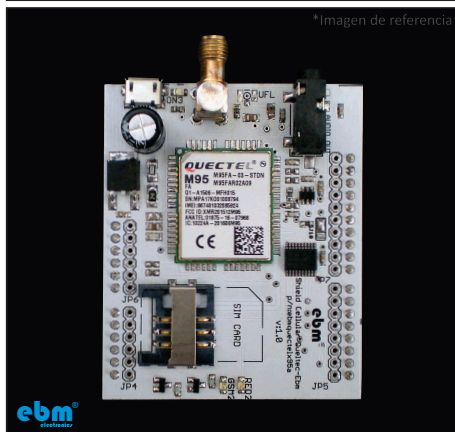
Reference: EBM-G005



Module: Quectel UG96 3G/GSM/GPRS/EDGE

- **Band:** 800/850/900/1900/2100@UMTS, 850/900/1800/1900@GSM
- **Specifications:** Full UART, PWRKEY, USB
- **Connector:** Arduino
- **Voltage:** GPIO, 3V or 5V
- **Antenna:** UFL - SMA
- **Size SIM:** Standard
- **LEDs:** ON, STATUS, NETWORK
- **Power supply:** 12VDC/2A

Reference: EBM-G006



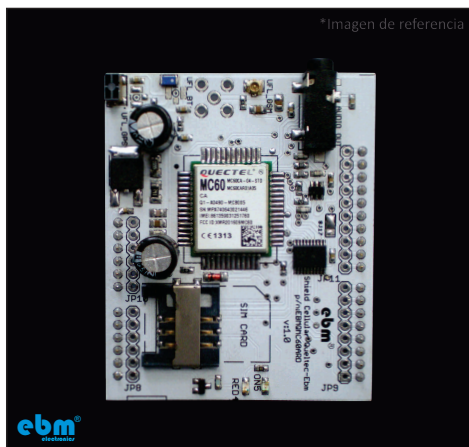
Module: Quectel BG96-EG95 3G/GSM/GPRS/EDGE/GPS (opcional)

- **Bandas:** B1/B2/B3/B4/B5/B8/B12/B13/B18/B19/B20/B26/B28
- **Specifications:** Full UART, PWRKEY, USB
- **Connector:** Arduino
- **Voltage:** GPIO, 3V or 5V
- **Antenna:** UFL - SMA, GPS(SMD-UFL)
- **Size SIM:** Standard
- **LEDs:** ON, STATUS, NETWORK
- **Power supply:** 12VDC/2A

Reference: EBM-G007

MODULES FOR DEVELOPMENT QUECTEL / EBM

www.ebmelectronics.com



Module: Quectel MC60 GSM/GPRS/GPS/BLUETOOTH

- **Specifications:** Full UART, PWRKEY, MICP, LOUDSPKP
- **Connector:** Arduino
- **Voltage:** GPIO, 3V or 5V
- **Antenna:** GSM(UFL-SMA), BT(SMD-UFL), GPS(SMD-UFL)
- **Size SIM:** Standard
- **LEDs:** ON, NETWORK
- **Power supply:** 12VDC/2A

Reference: EBM-G008



Module: Quectel UG96 3G/GSM/GPRS/EDGE

- **Band:** 800/850/900/1900/2100@UMTS, 850/900/1800/1900@GSM
- **Connector:** USB
- **Antenna:** UFL- SMA
- **Size SIM:** Standard
- **LEDs:** ON, STATUS, NETWORK
- **Power supply:** 5VDC / 2A

Reference: EBM-G009



Module: Quectel MC60 GSM/GPRS/GPS/BLUETOOTH/STM32F070

- **Specifications:** TX-RX UART, PWRKEY
- **Microcontroller:** STM32F070, 3 OUT MOSFET, 4 GPIO 3.3V
- **Accelerometer:** LIS2DE12
- **Antenna:** GSM(UFL-SMA), BT(SMD-UFL), GPS(SMD-UFL)
- **Size SIM:** Standard
- **LEDs:** ON, NETWORK
- **Power supply:** 5~12VDC/2A

Reference: EBM-G0010

ELECTROBIOMEDICAL S.A.S.

INGENIERIA ESPECIALIZADA

ElectroBiomedical S.A.S.

Address: Carrera 70B # 3A -77- Bogotá-Colombia

Phone: (+571) 3028245 - (+57) 3215360716

Sales: ventas@electrobiomedical.com.co